

## Assembly Procedure

*Please follow the information provided in this section to perform the complete assembly procedure of the notebook. Be sure to use proper tools described before.*

**A**fter you have completed the previous chapter of complete disassembly, please follow this chapter to assemble the notebook back together. This chapter describes the procedures of the complete notebook assembly. In addition, in between procedures, the detailed assembly procedure of individual modules will be provided for your service needs.

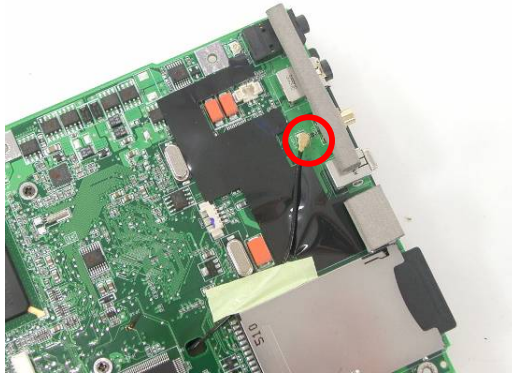
The assembly procedure consists of the following steps:

- Motherboard Module
- Bottom Case Module
- LCD Module
- Top Case Module
- Main Memory Module
- Keyboard
- ODD Module
- CPU Module
- Second Memory Module
- TV Tuner Module
- Wireless LAN Module
- HDD Module
- Battery Module

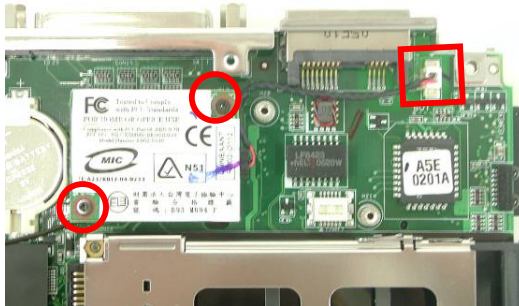
## Motherboard Module

### Installing Motherboard Module

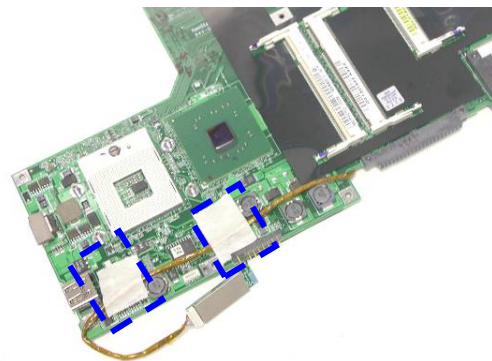
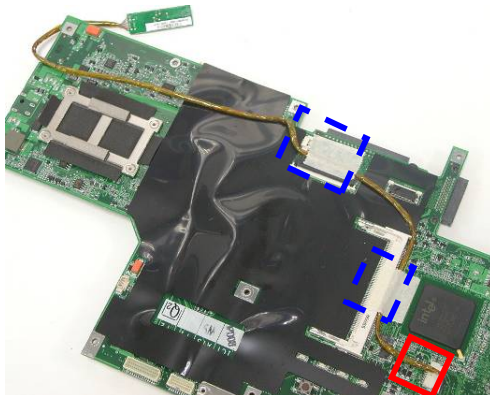
1. Connect the antenna on the motherboard.



2. Install the modem module and secure 2 screws [M2 \* 4(W)] to fix it then connect the cable.



3. Paste 2 tapes and connect the Bluetooth cable the turn over the MB paste 2 tapes to fix the Bluetooth board.

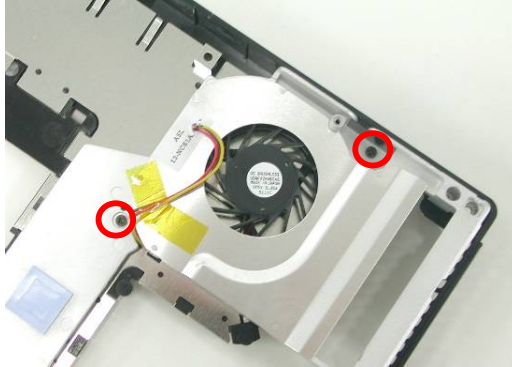


## Bottom Case Module

The illustrations below show how to assemble and install the bottom case module of the notebook. The module contains the bottom case itself, Speaker sets.

### Installing Bluetooth Module

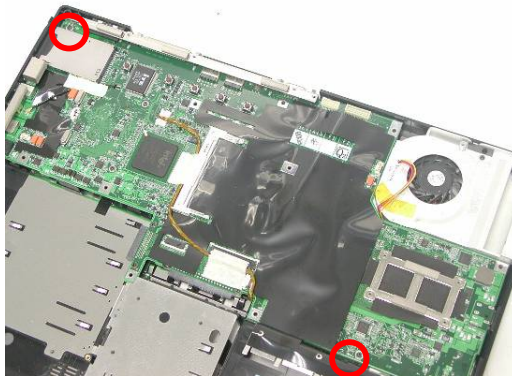
1. Install the FAN module and secure 2 screws [M2 \* 4(L)] to fix it.



2. Place the motherboard into the bottom case at the angle of 30 degrees.



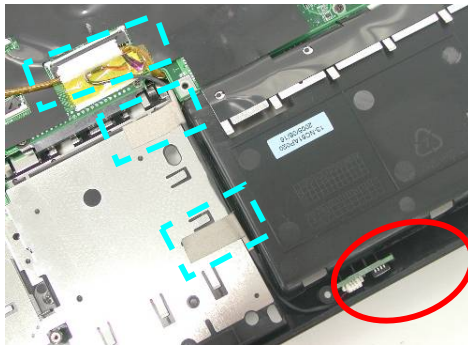
3. Secure 2 screws [M2 \* 6(L)] to fix the M/B .



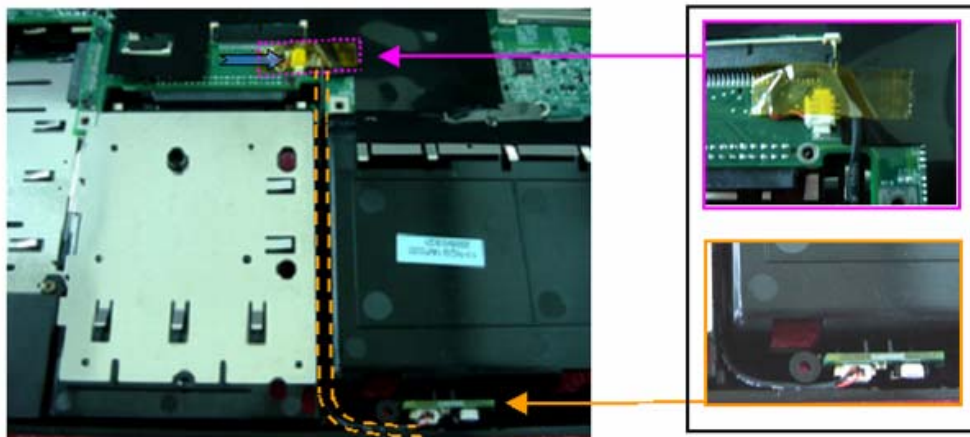
4. Connect the FAN cable and paste 1 yellow tape to fix the cable.



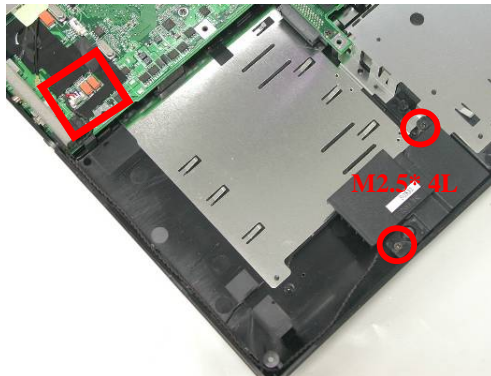
5. Install the CIR board and connect the CIR cable then paste 3 tapes to fix the cable.



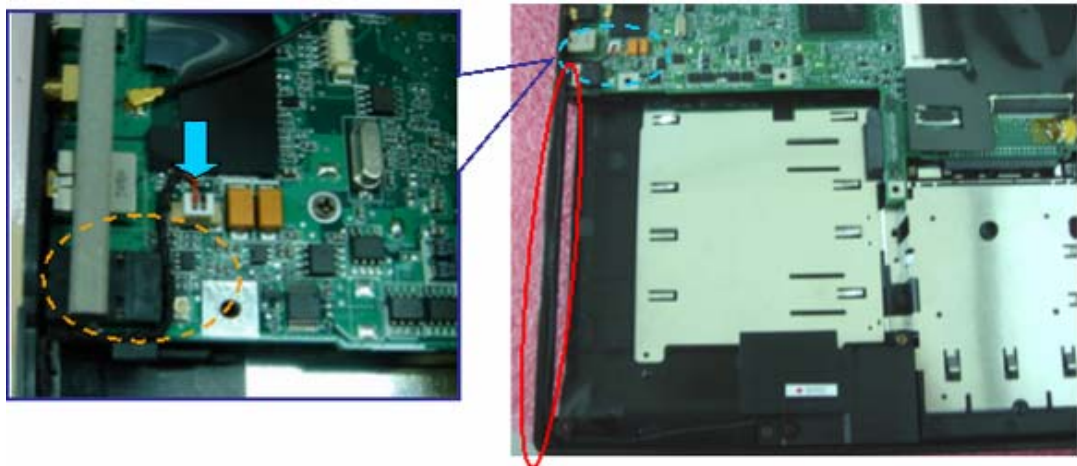
6. Arrange the CIR cable into the bottom case.



7. Install the speaker module and connect the speaker cable then secure 2 screws (M2\*4L) to fix it.



8. Arrange the woofer cable beside the audio jack and check the cable arranged at speaker's hook.

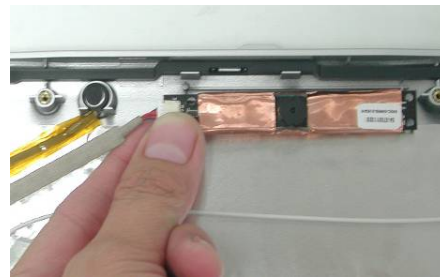
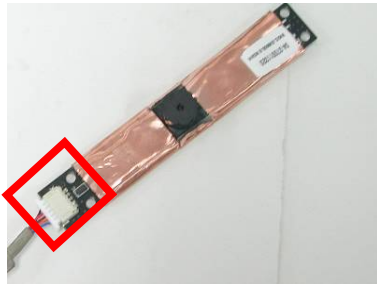


## LCD Module

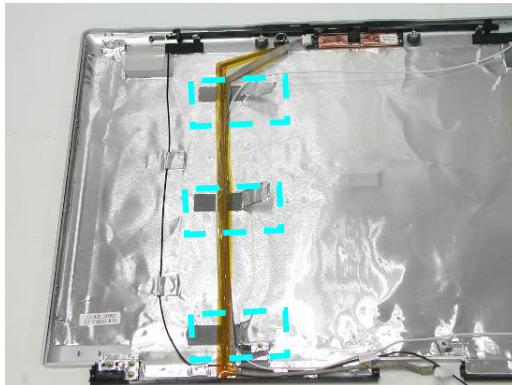
The illustrations below show how to assemble and install the LCD module into the notebook. The module contains the LCD panel, inverter board, LCD hinge bracket, hinge cover, LCD front cover, and LCD back cover.

### Assembling LCD module

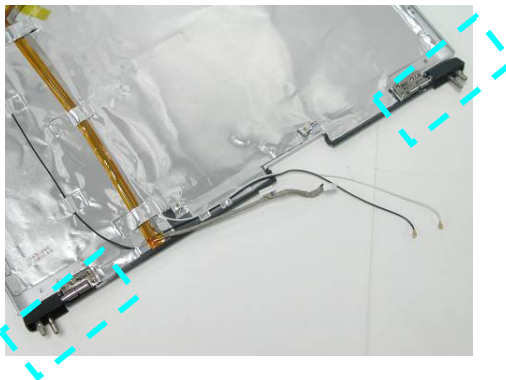
1. Connect the CCD cable and install the CCD module on LCD back cover.



2. Paste 3 tapes to fix the cable on the LCD back cover.



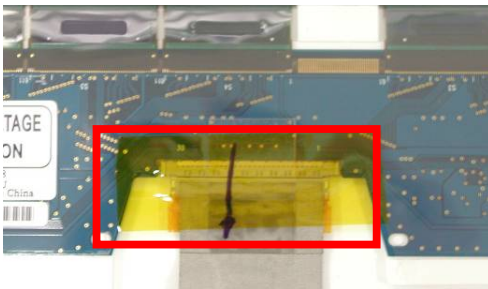
3. Install LCD Hinges on the LCD back cover.



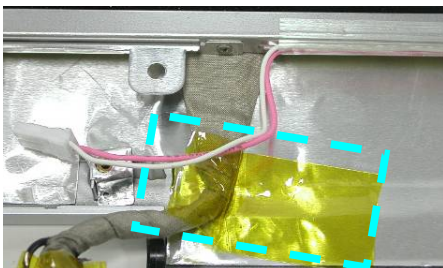
- Carefully, place 2 hinge brackets to both sides of the LCD panel secure 8 screws [M2\* 3(L)] on the both side.



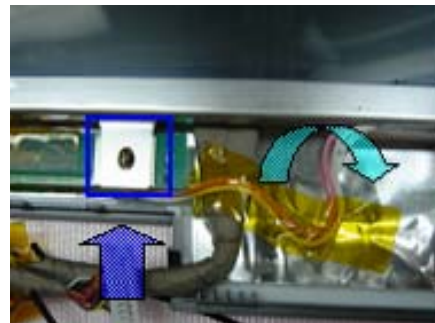
- Connect the coaxial FPC and paste 1 yellow tape.

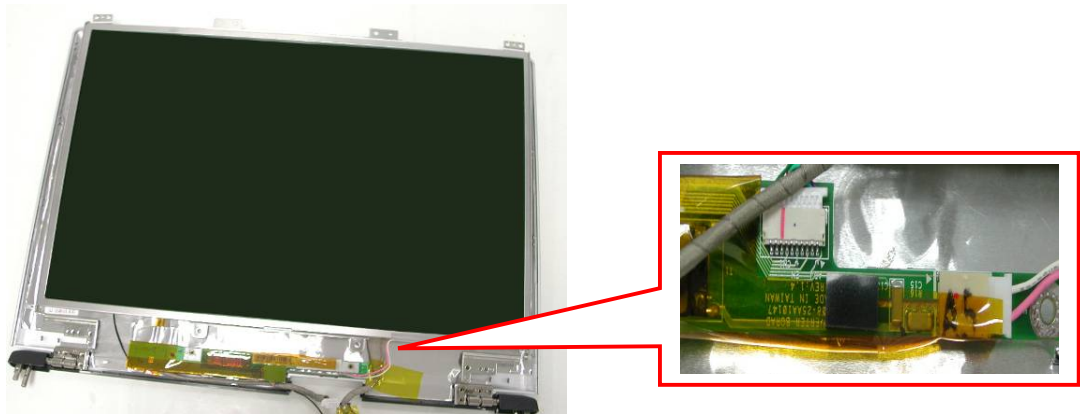


- Install the LCD module on LCD back cover then paste 1 yellow tape.



- Install the inverter board on the LCD back cover and connect coaxial cable & LCD cable.





8. Secure 6 screws [M2.5 \* 6(L)] to fix LCD module.

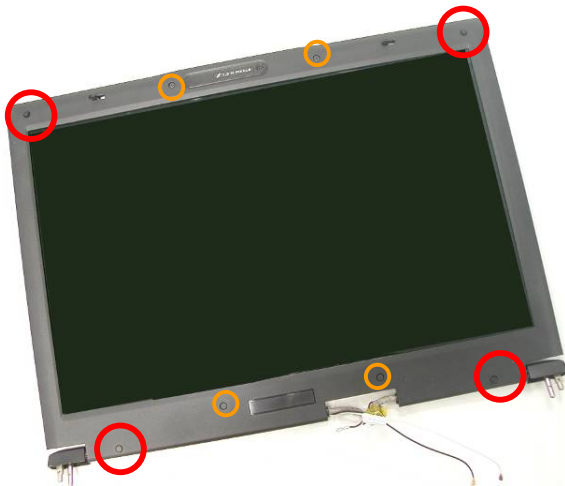




9. Place LCD front cover and press 4 sides until it snaps into place.



10. Secure 4 screw [M2.5 \*6(L)] & 4 screw [M2 \*6(L)] and paste 8 rubber pads.

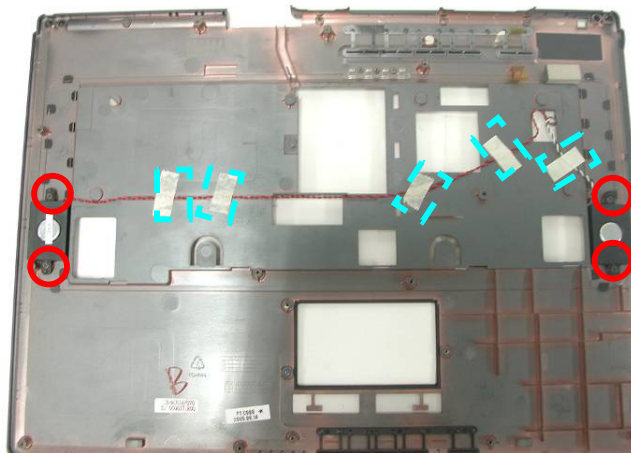


## Top Case Module

The illustrations below show how to assemble and install the top case module of the notebook. The module contains the top case itself, touch pad module and instant key module.

### Assembling Speaker module

1. Install the both speaker modules on the Top case and secure 4 screws [M2 \* 4(L)] on the both side then paste 5 tapes to fix the cable.

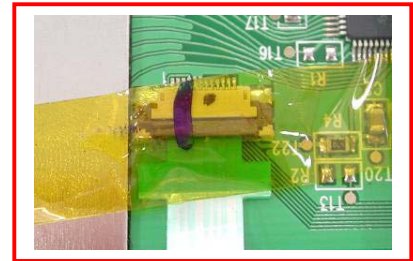
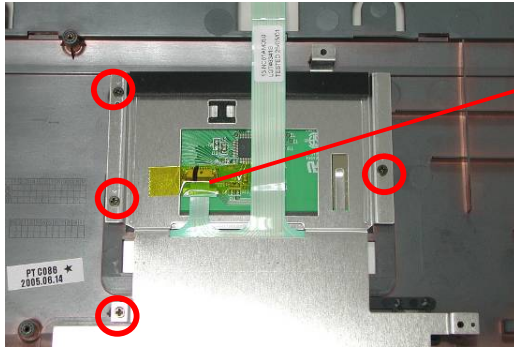


### Assembling Touch pad module

1. Install the Touch pad board, then place the Touch pad bracket



2. Connect the Touch pad board FPC and secure 4 screws [M2 \* 3(L)] to fix the touchpad on top case.



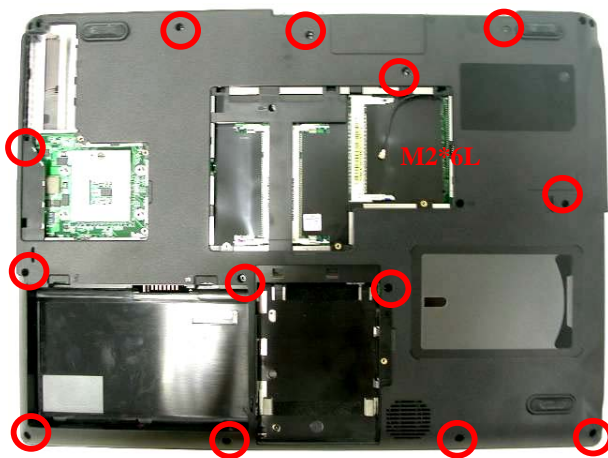
Assembling Top Case Module

TOP CASE  
MODULE  
ASSEMBLY

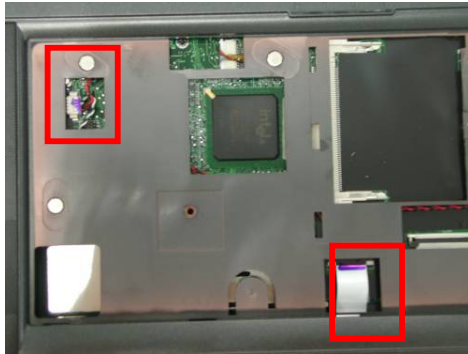
1. Combine the Top case with the Bottom case.



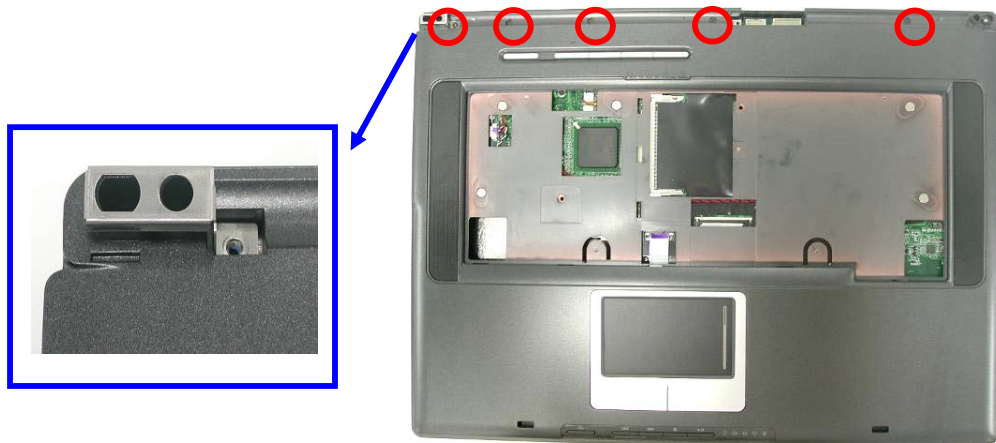
2. Secure 8 screws [M2 \* 4(L)] on the bottom case.



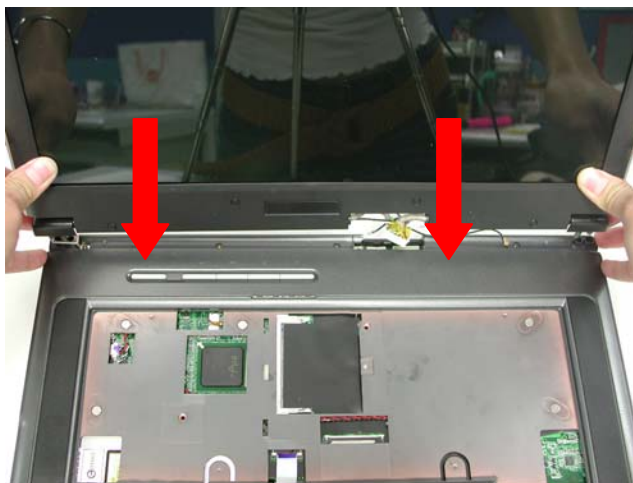
3. Turn over the NB and Connect the speaker cable & Touch pad FPC on the motherboard.



4. Put the hinge bracket and secure 5 screws [M2 \* 4(L)] on the top case.



5. Combine the LCD Module and the Top case module



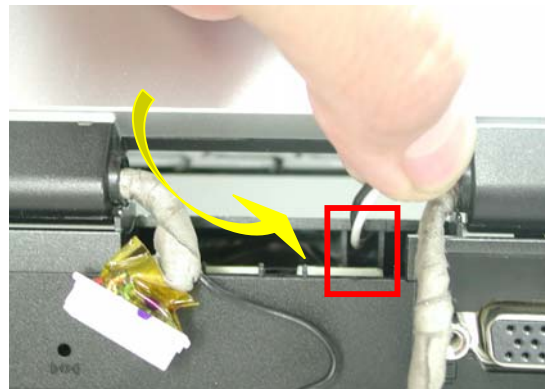
6. Turn over the NB and secure 4 screws [M2 \* 6(L)] on the bottom case.



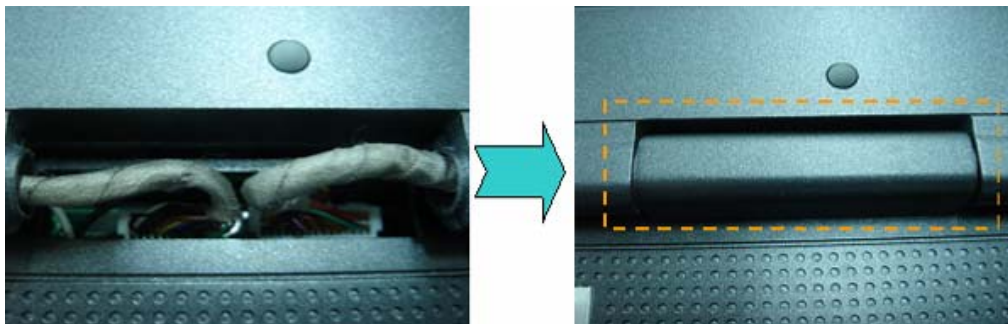
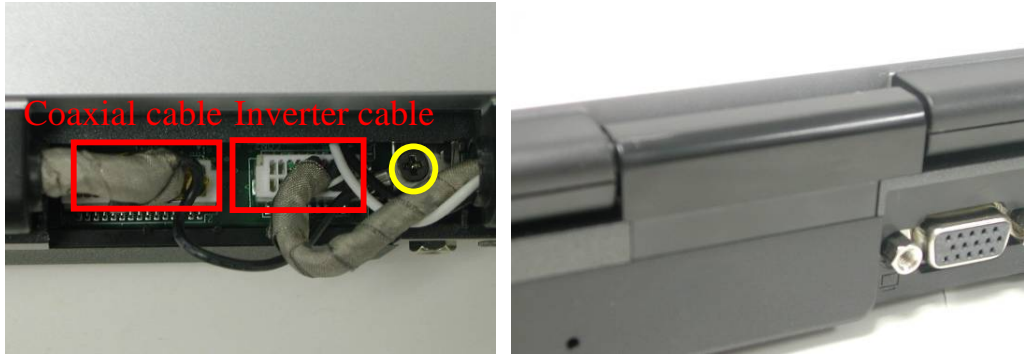
7. Secure 2 screws [M2 \* 6(L)] on rear side.



8. Take the antenna and pierce them through a square hole.



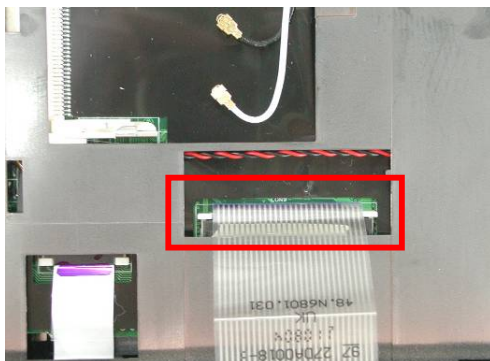
9. Connect the Coaxial cable & Inverter cable and secure 1 screws [M2 \* 4(L)] to fix them and install the cable cover.



WIRELESS  
LAN  
K/B INSTALL

Wireless LAN Module  
Before install Wireless LAN modules o  
K/B Install

1. Insert the keyboard FPC into the keyboard connector, and tighten the connector.



Wireless LAN Module

The illustrations below show how to install Wireless LAN module.

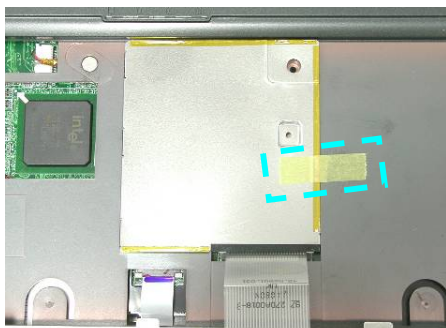
2. Insert the wireless LAN module into the mini-PCI socket at the angle of 45 degrees, and then push it down to latch the module.



3. Insert antenna into WLAN card terminal and take the black antenna insert into main terminal and the white antenna insert into aux terminal.



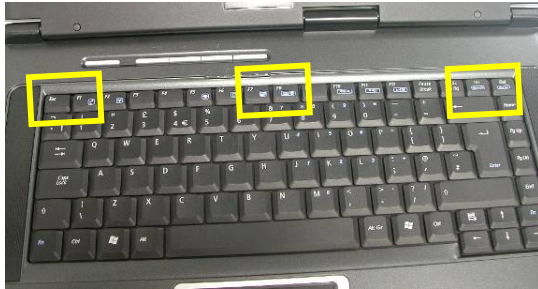
1. Install the Mini-PCI bracket and paste 1 yellow tape to fix it.



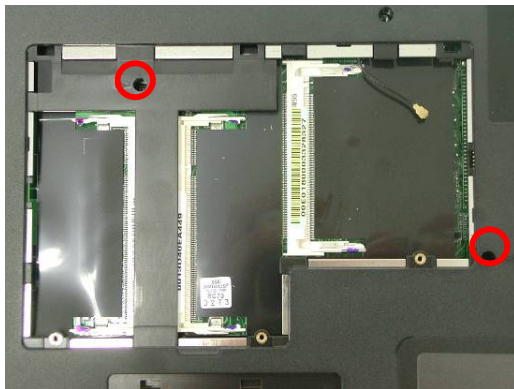
## Keyboard Module

The illustration below shows how to install the keyboard plate.

4. Lay the keyboard down until it snaps into place.



5. Secure 2 screws (M2\*8L) on bottom case.



## ODD Module

ODD Module

The illustrations below show how to install ODD module.

1. Insert the ODD drive until it clicks into place.





- Secure 2 screws [M2 \* 4(L)] and install the rubber on the bottom case.

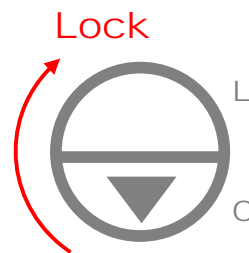


### CPU Module

The illustrations below show how to assemble and install the CPU module of the notebook. The module contains the CPU itself, FAN module and Heat Sink module.

#### Installing CPU module

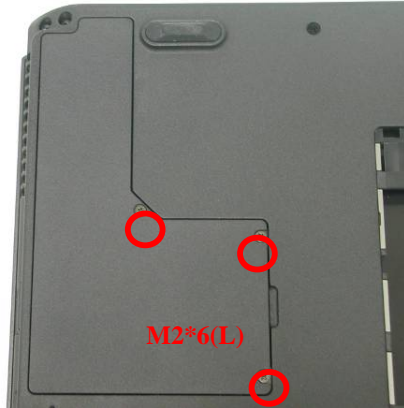
- Apply a new thermal pad on the CPU die and use vacuum handling tool to insert CPU to Molex socket.
- Turn the non-removable screw 180 degrees clockwise to secure the CPU.



- Install the CPU heat sink module and secure 4 screws [M2 \* 4(L)] by order paste 1 warranty label.



4. Install the DIMM door and secure 3 screws [M2 \* 6(L)] to fix it.



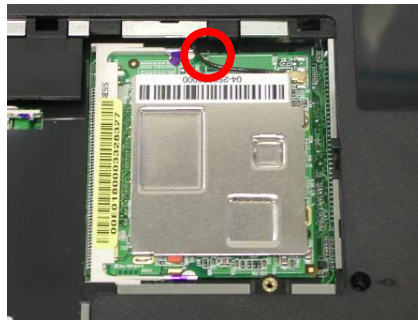
## TV TUNER Module

TV TUNER

### TV TUNER Module

The illustrations below show how to install TV Tuner module.

1. Insert the wireless TVTUNER module into the mini-PCI socket at the angle of 45 degrees, and then push it down to latch the module.
2. Connect the RF cable.



---

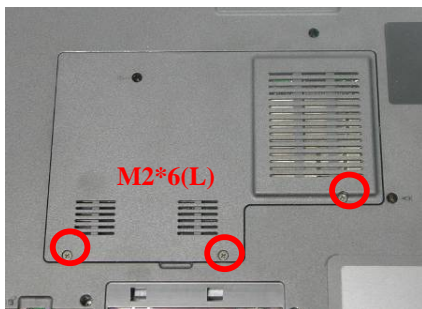
## Second Memory Module

### Memory Install

1. Insert the memory into the memory socket at the angle of 45 degrees, and then push it down to latch the memory.



2. Install the CPU door and secure 3 screws [M2 \* 6(L)] to fix it.



HDD

INSTALL

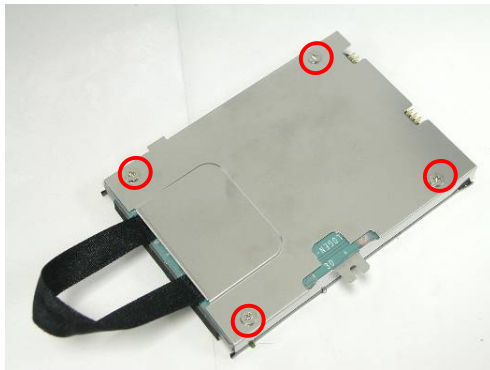
## HDD Module

The illustrations below show how to install the HDD module into the notebook.

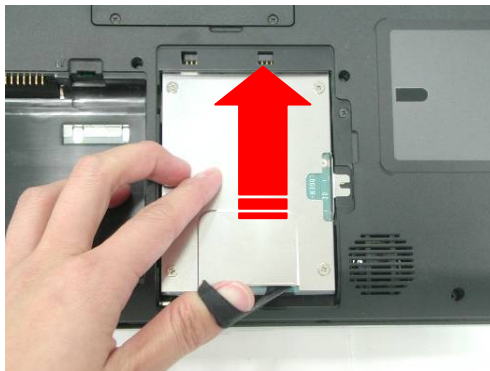
### HDD Module

The illustrations below show how to install HDD module.

1. Secure 2 screws [M2 \* 3(L)] and 2 screws on the other side [M2 \* 3(L)].



2. Plug in the hard drive into HDD slot.



3. Install the HDD cover, secure 1 screws [M2 \* 6(L)].



---

## Battery Module

### Battery Module

The illustrations below show how to install battery module.

1. Insert the battery pack until it clicks into place to secure the battery pack.

